

Vous venez de trouver une règle mise en ligne par des collectionneurs qui partagent leur passion et leur collection de jeux de société sur Internet depuis 1998.

Imaginez que vous puissiez accéder, jour et nuit, à cette collection, que vous puissiez ouvrir et utiliser tous ces jeux.

# Ce rêve est devenu réalité !

Chantal et François ont créé l'Escale à jeux en 2013. Depuis l'été 2022, Isabelle et Raphaël leur ont succédé. Ils vous accueillent à Sologny (Bourgogne du sud), au cœur du Val Lamartinien, entre Mâcon et Cluny, à une heure de Châlon-sur-Saône ou de Lyon, une heure et demi de Roanne ou Dijon, deux heures de Genève, Grenoble ou Annecy et quatre heures de Paris (deux heures en TGV).

L'Escale à jeux est un ludogîte, réunissant un meublé de tourisme ★★★ modulable de 2 à 15 personnes et une ludothèque de plus de 9000 jeux de société.

Au total, 320 m<sup>2</sup> pour jouer, ripailler et dormir.

**ESCALE À  
JEUX**

[escaleajeux.fr](http://escaleajeux.fr)

09 72 30 41 42

06 24 69 12 99

[escaleajeux@gmail.com](mailto:escaleajeux@gmail.com)



# RÈGLES DU JEU

Saurez-vous retrouver l'emplacement des animaux sauvages conformément aux indices donnés sur les boîtes ?

- 1 Choisissez un défi parmi les fiches proposées. Trouvez dans un premier temps de quels blocs vous aurez besoin. Les autres seront écartés.
- 2 Reproduisez l'image proposée par le défi à l'aide de deux cubes au moins.
- 3 Vous aurez trouvé la solution lorsque la réalisation physique correspondra parfaitement à l'illustration de la fiche défi.

## **CONSEIL POUR LES ADULTES:**

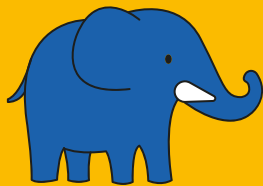
*Essayez de poser des questions comme: "Où penses-tu que ce bloc doit être mis?" , "Pourquoi penses-tu que ce bloc doit être placé comme ça?" et "Quel animal est visible à travers la fenêtre?" pour aider votre enfant à améliorer ses compétences linguistiques et pour l'aider à résoudre le problème par lui-même.*

*Pour aider votre enfant à mieux comprendre l'organisation spatiale, construisez d'abord un des assemblages de blocs en face de son regard pour lui expliquer ce que signifie la vue de face. Ensuite, éloignez-vous de la table, pour que votre enfant puisse voir l'assemblage de blocs sous d'autres angles.*

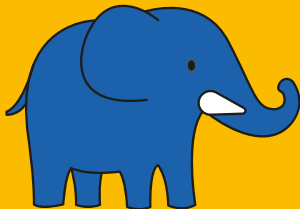
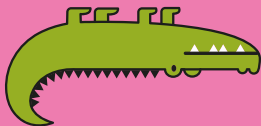
## **SOLUTIONS:**

Les solutions peuvent être trouvées sur un feuillet séparé, inclus dans la boîte.

1



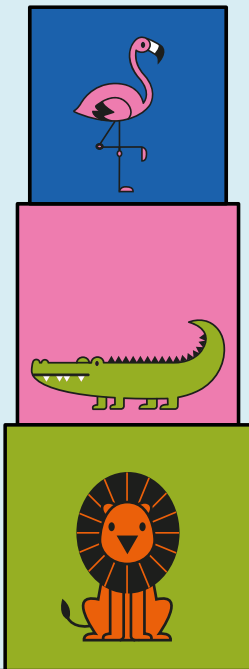
2



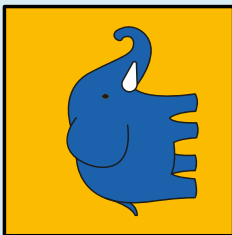
3



4



5

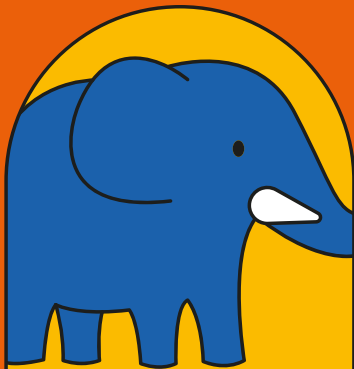


6





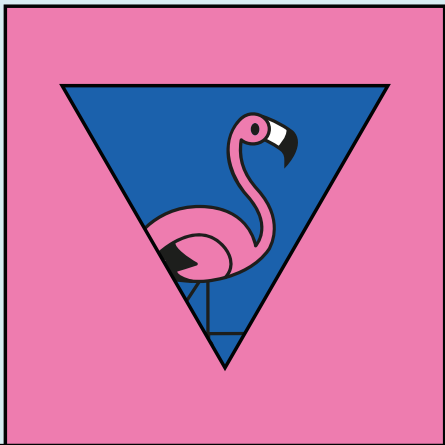
7



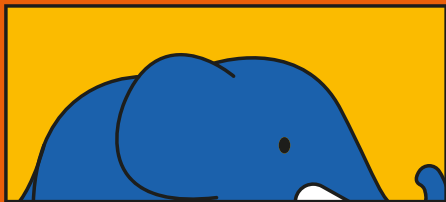
8



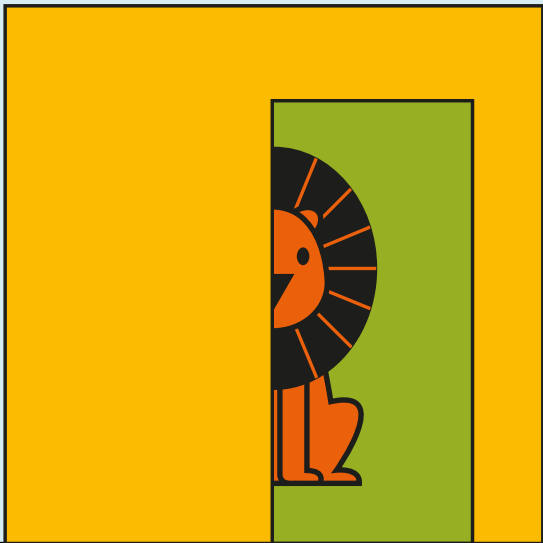
9



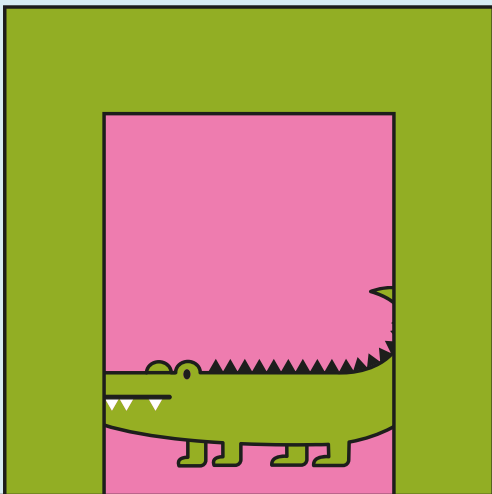
10



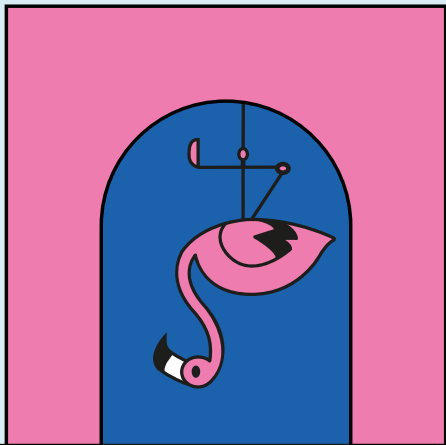
11



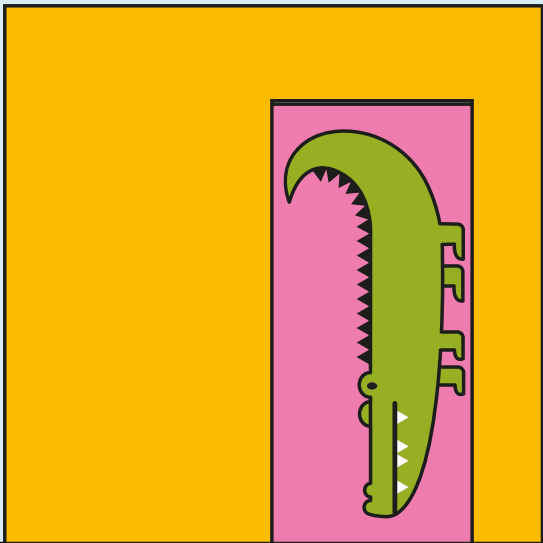
12



13

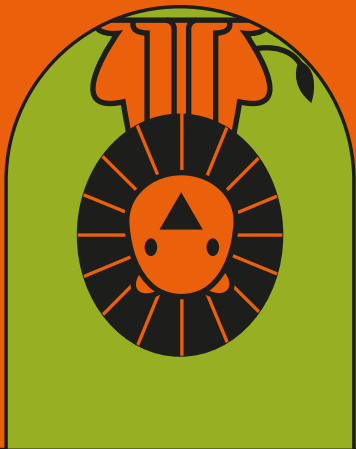


14

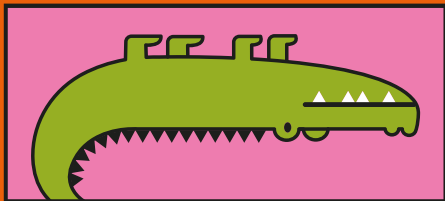




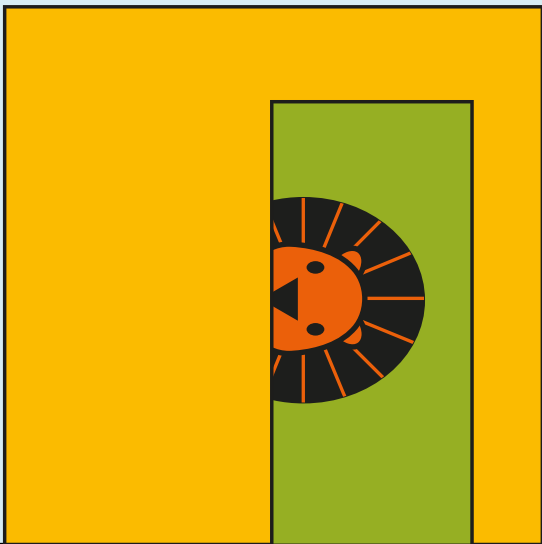
15



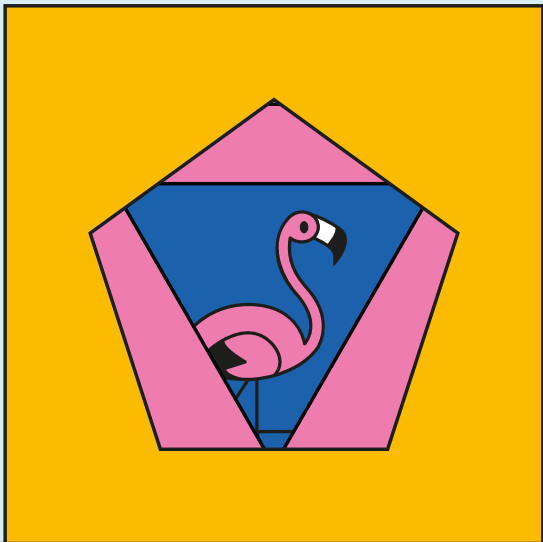
16



17



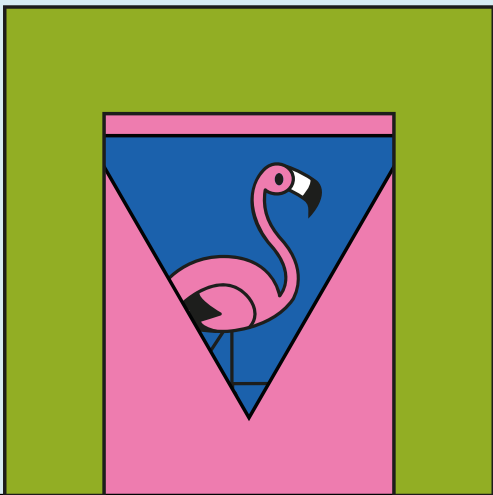
18



19



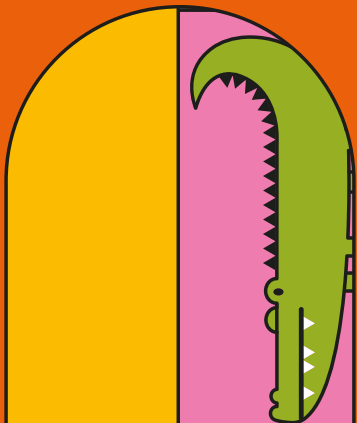
20



21

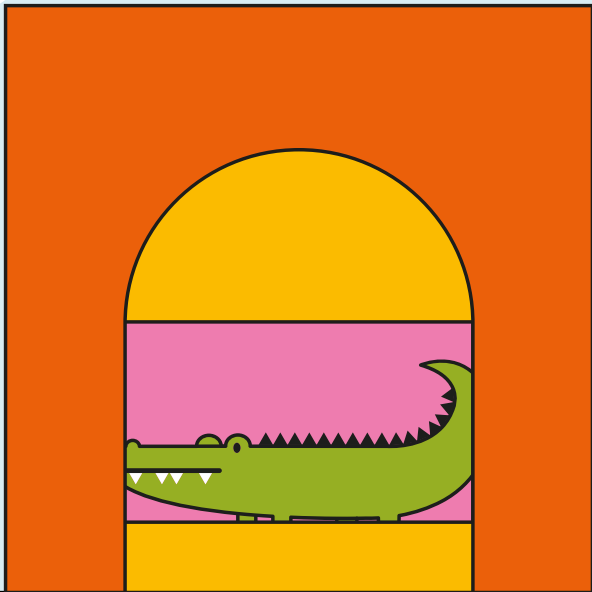


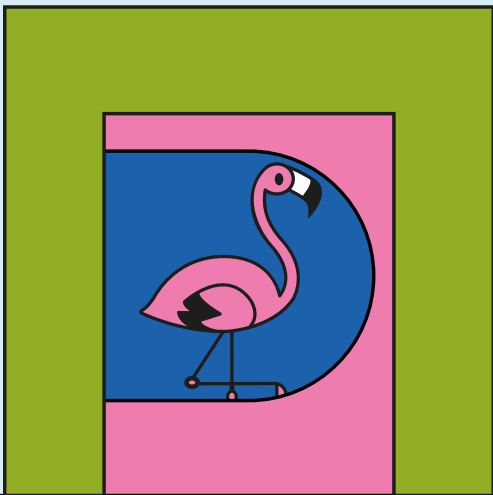
22



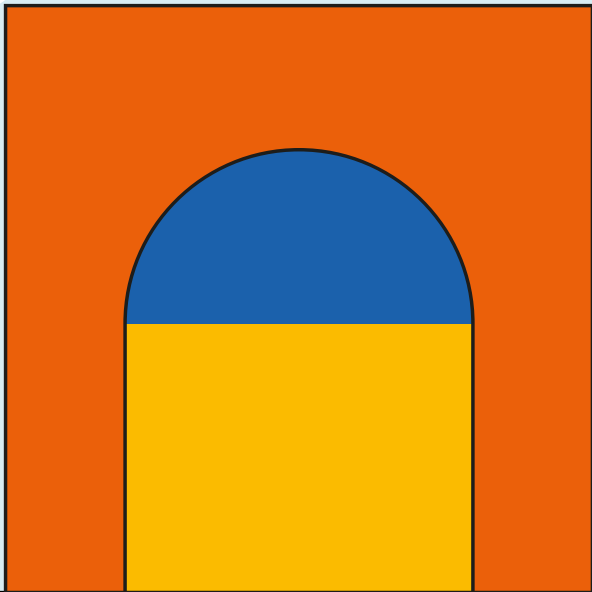


23





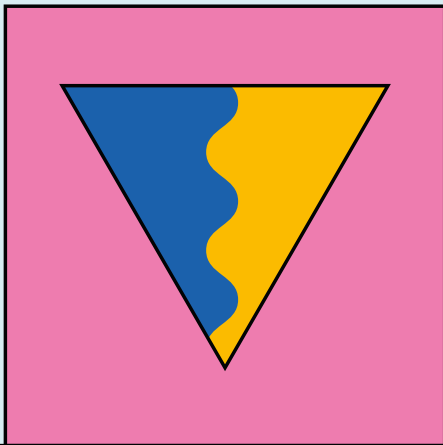
25

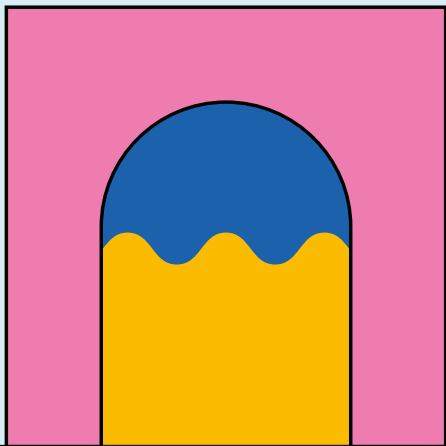


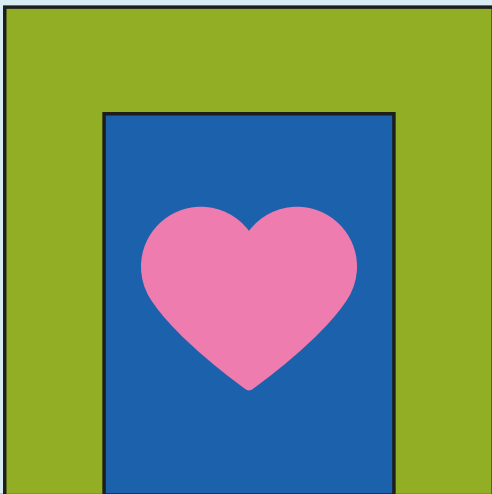
26



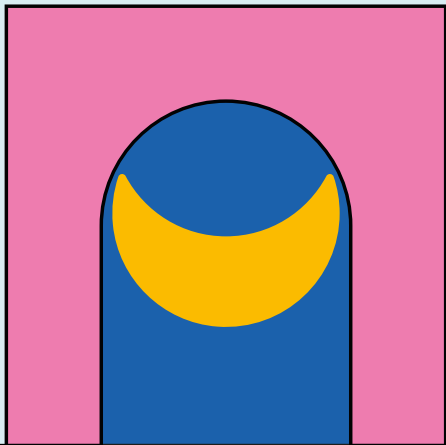
27





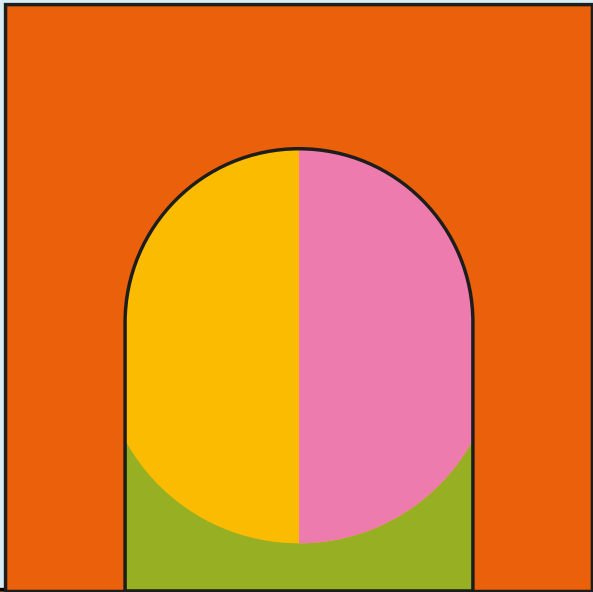


30

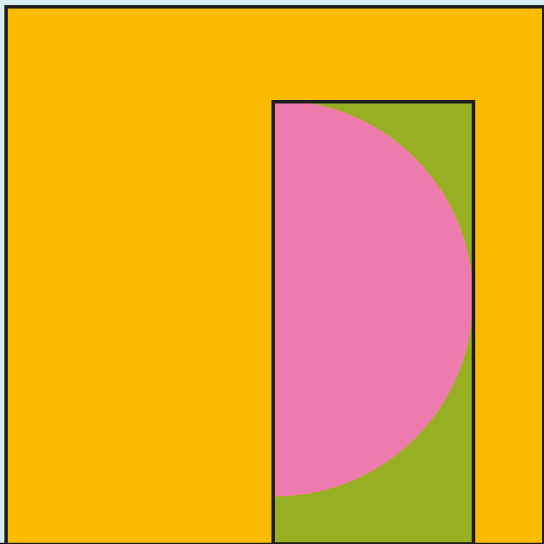




31

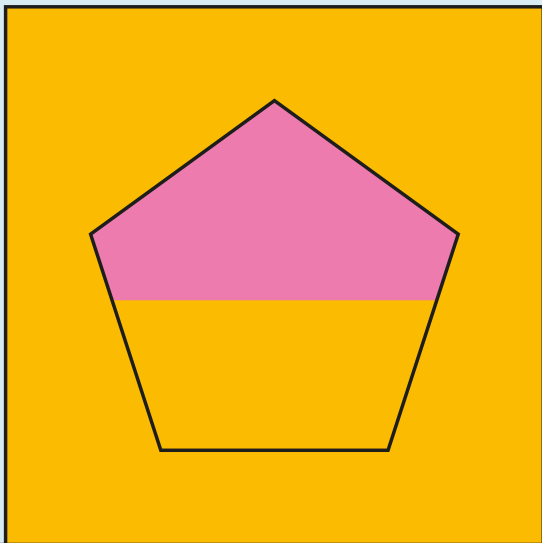


32

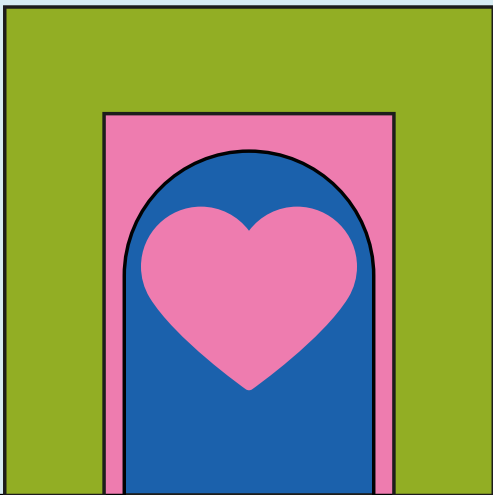




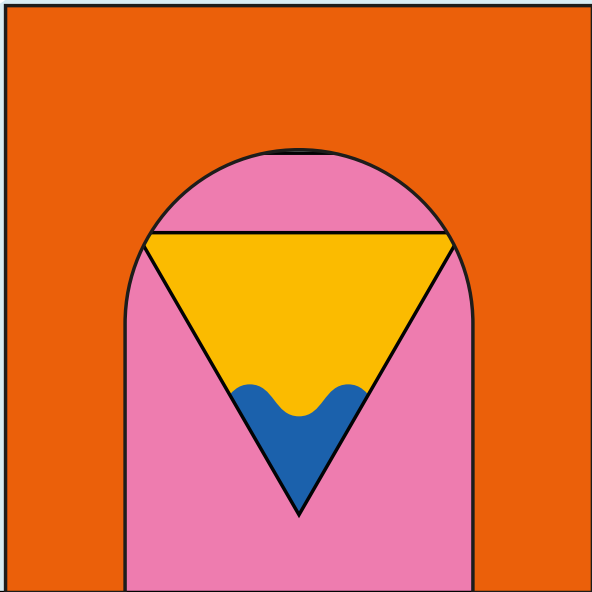
34



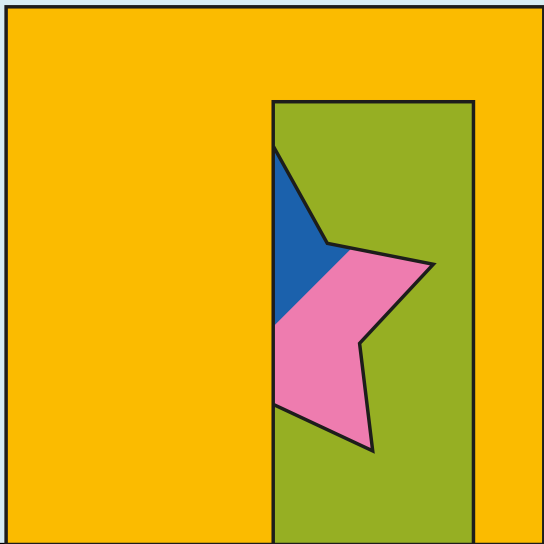
35

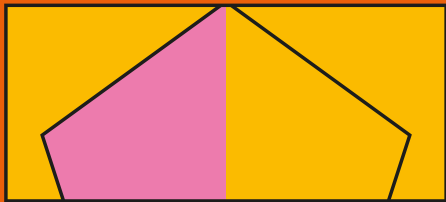


36

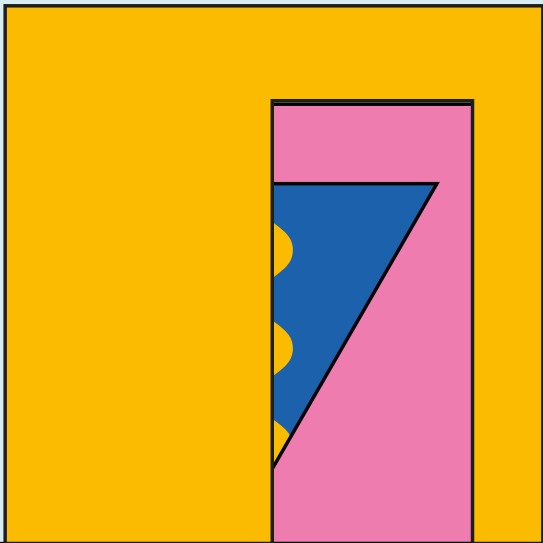


37

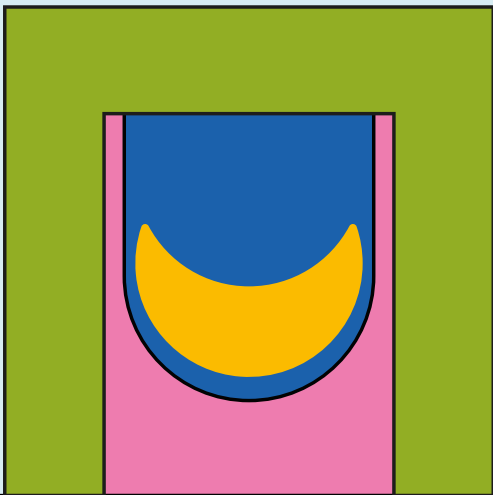




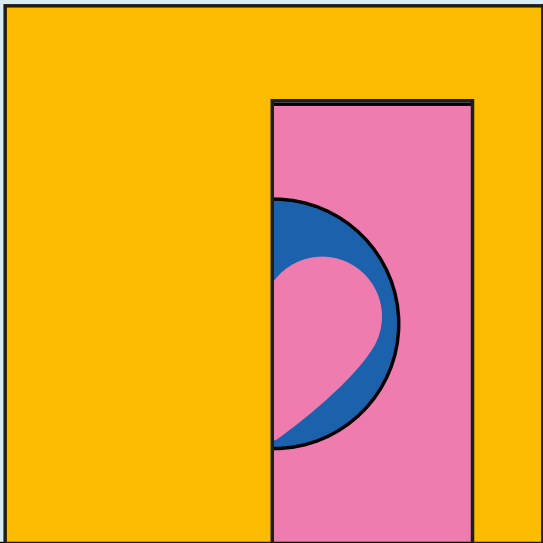




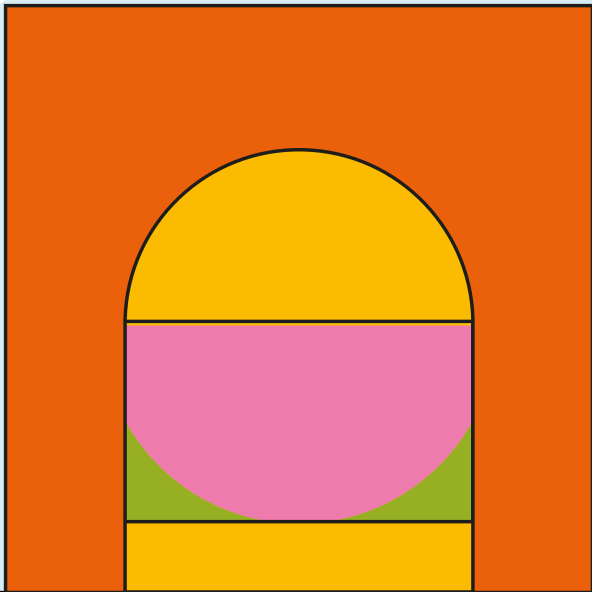
40



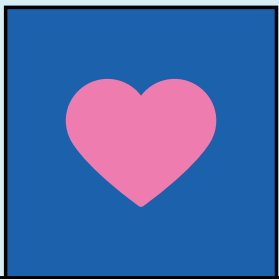
41



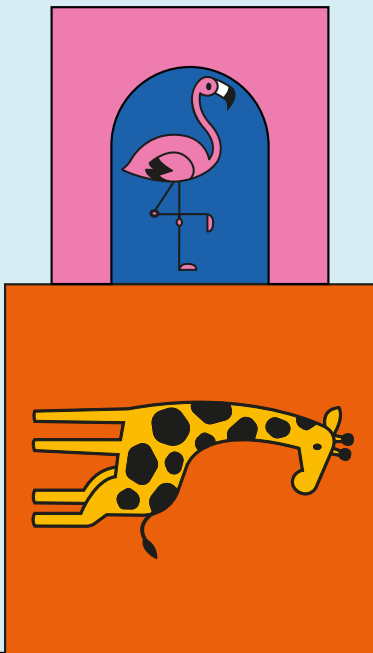
42



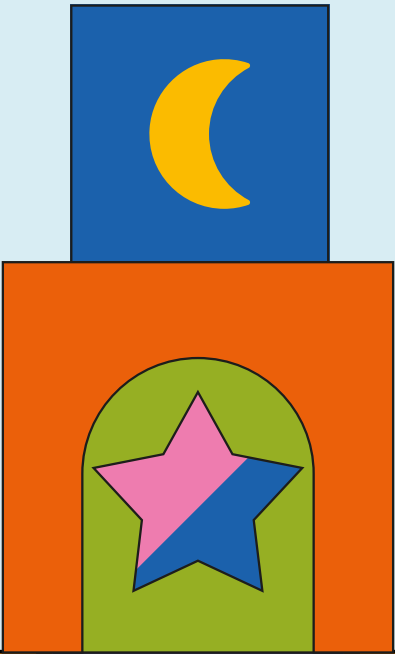
43



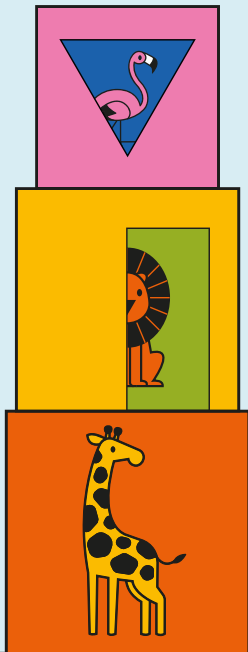
44



45

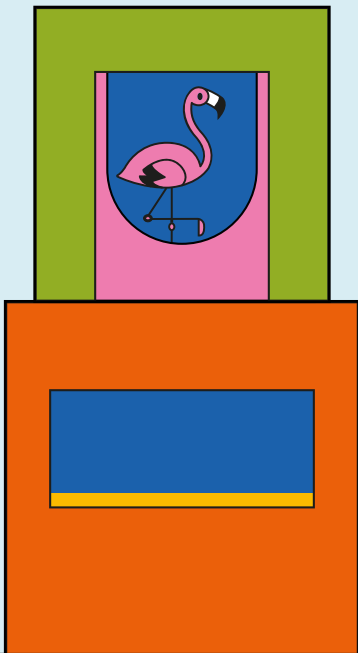


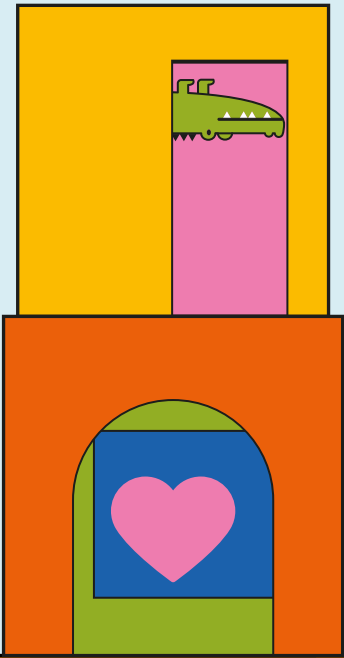
46





47







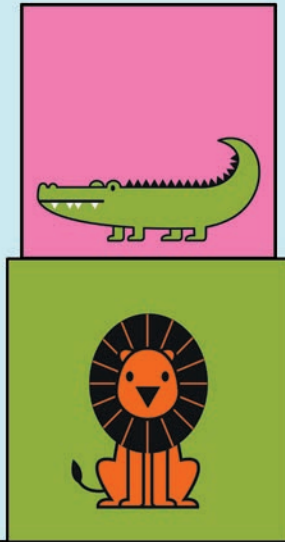
# peek-a-zoo



EXTRA CHALLENGES

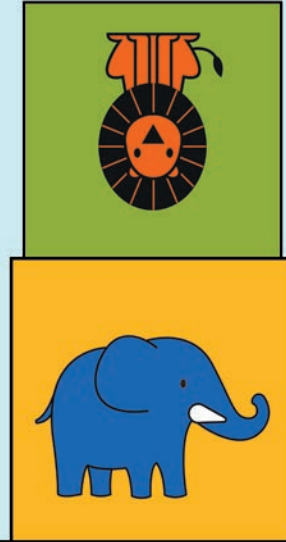
# CHALLENGES

1



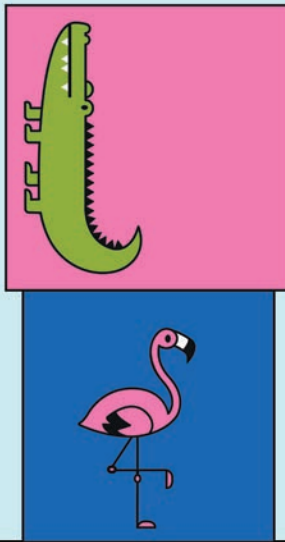
© 2022 SMART - Belgium

2



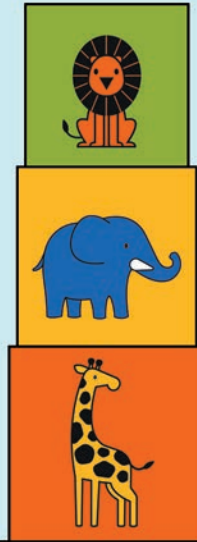
© 2022 SMART - Belgium

3



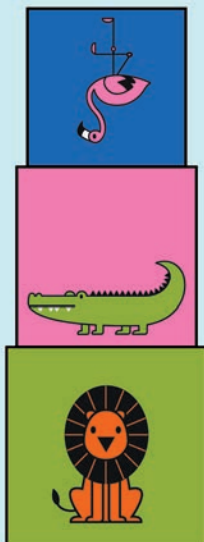
© 2022 SMART - Belgium

4



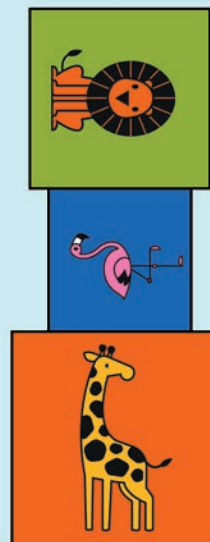
© 2022 SMART - Belgium

5



© 2022 SMART - Belgium

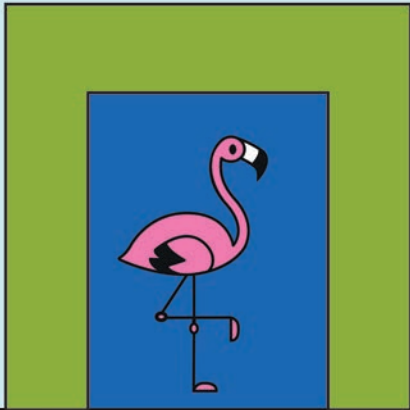
6



© 2022 SMART - Belgium

# CHALLENGES

7



© 2022 SMART - Belgium

8



© 2022 SMART - Belgium

9



© 2022 SMART - Belgium

10



© 2022 SMART - Belgium

11



© 2022 SMART - Belgium

12



© 2022 SMART - Belgium

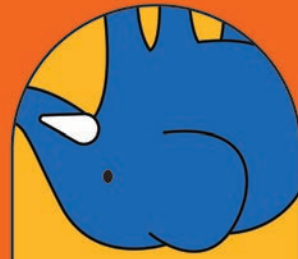
# CHALLENGES

13



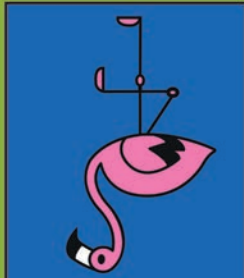
© 2022 SMART - Belgium

14



© 2022 SMART - Belgium

15



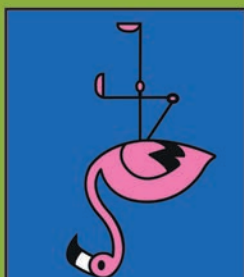
© 2022 SMART - Belgium

16



© 2022 SMART - Belgium

15



© 2022 SMART - Belgium

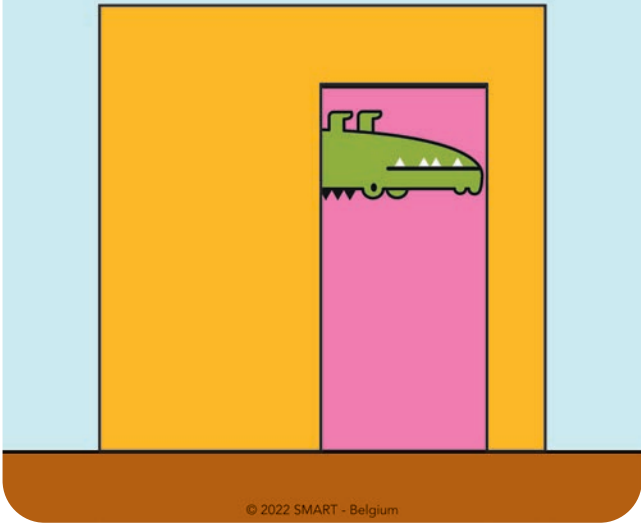
16



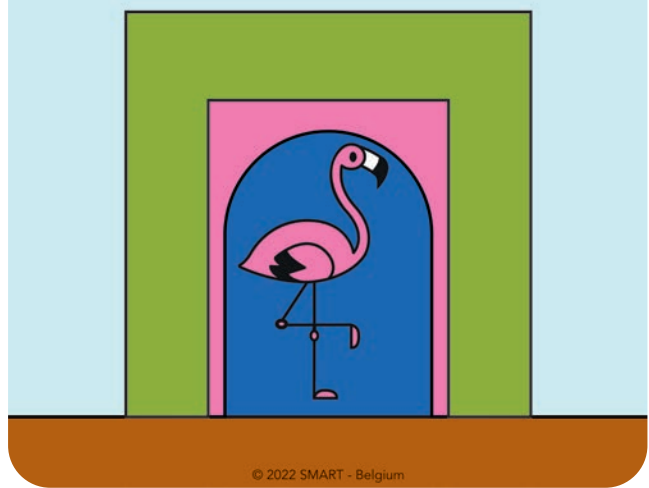
© 2022 SMART - Belgium

# CHALLENGES

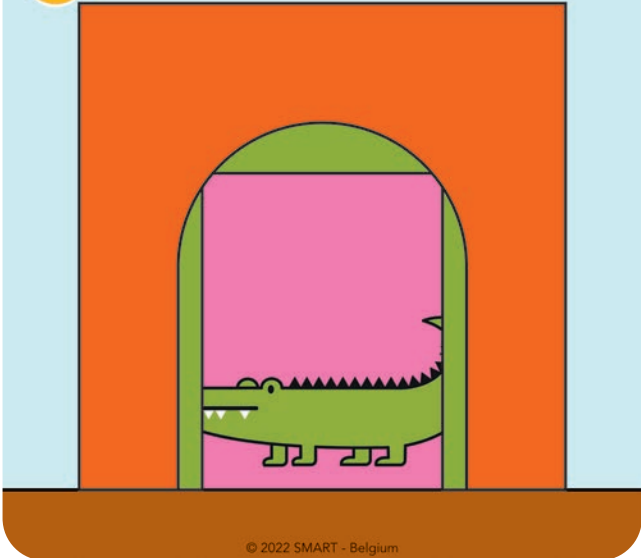
17



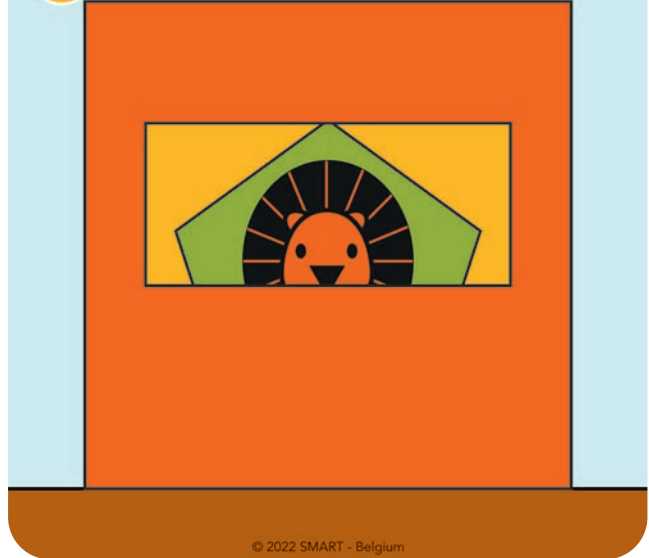
18



19



20



21

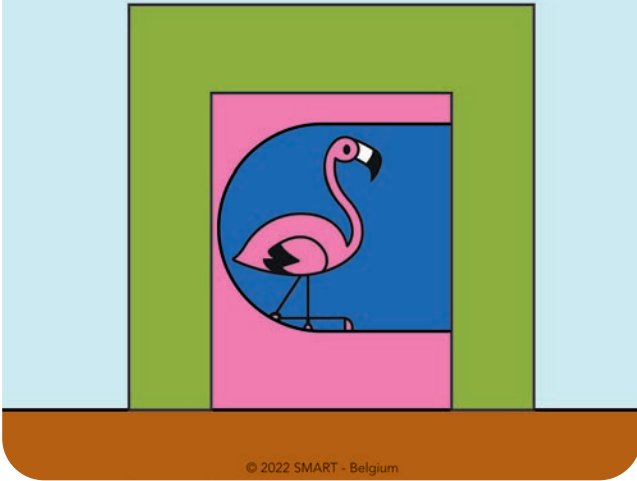


22

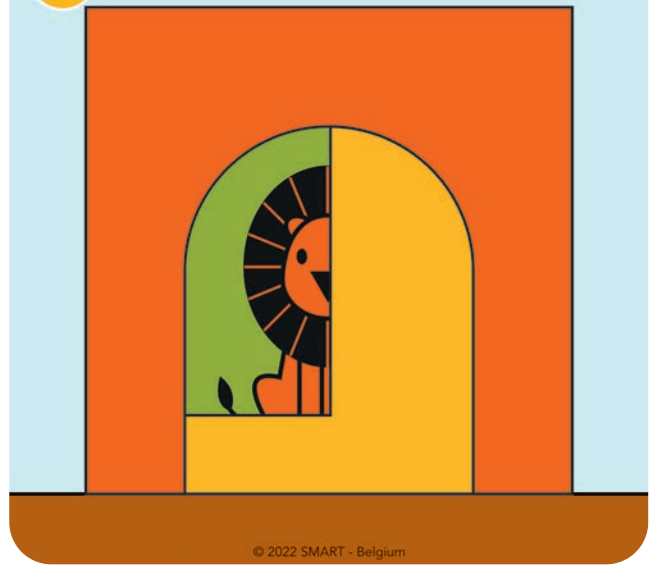


# CHALLENGES

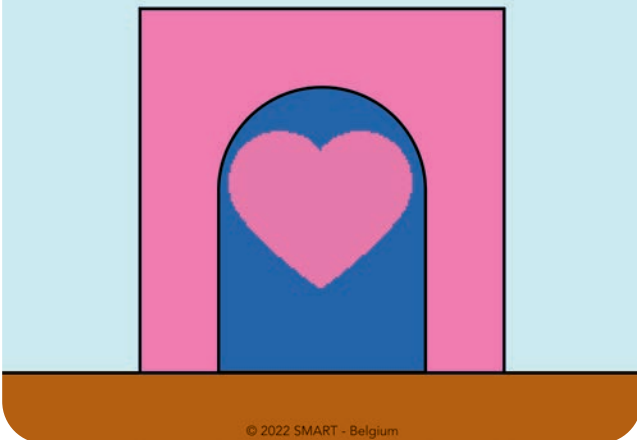
23



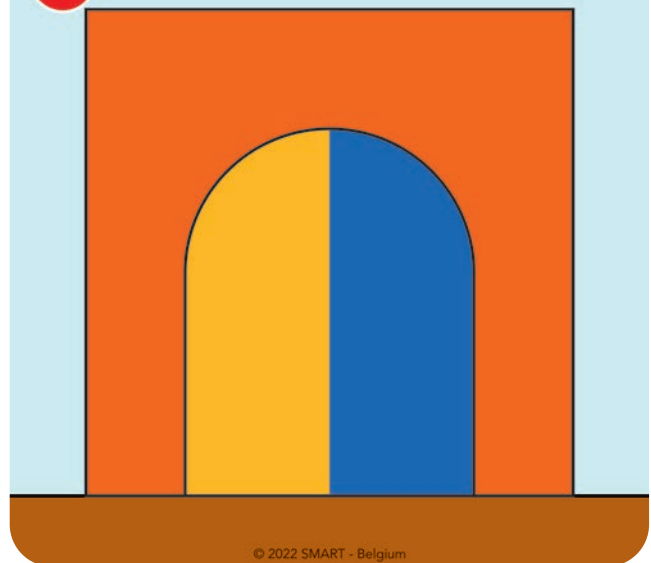
24



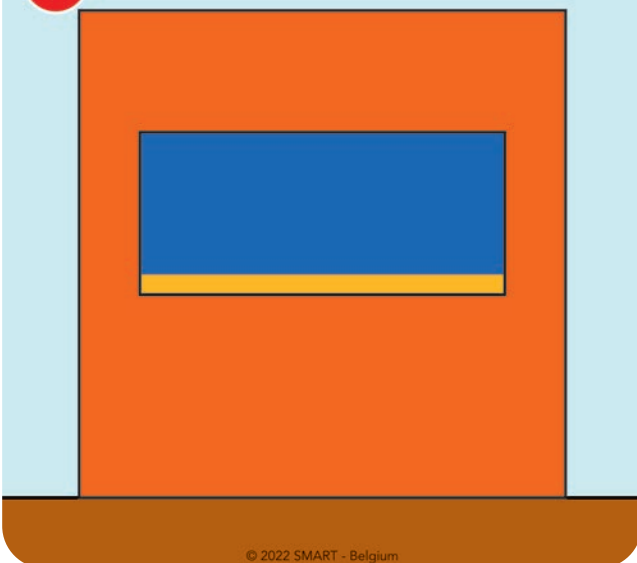
25



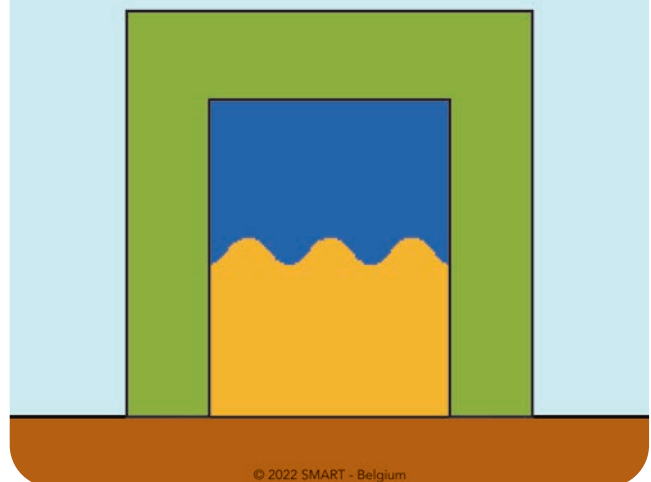
26



27



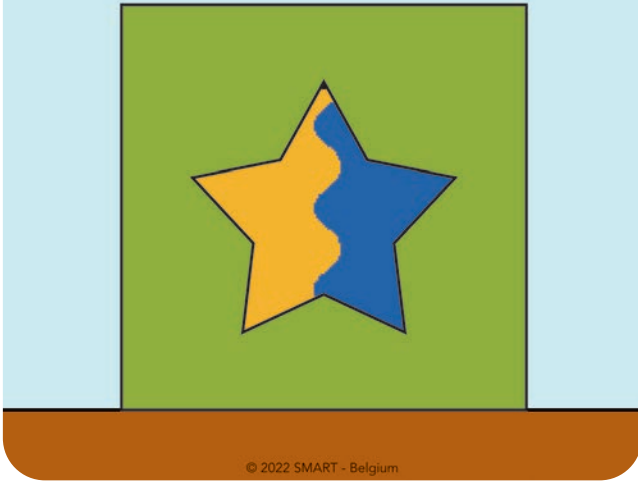
28



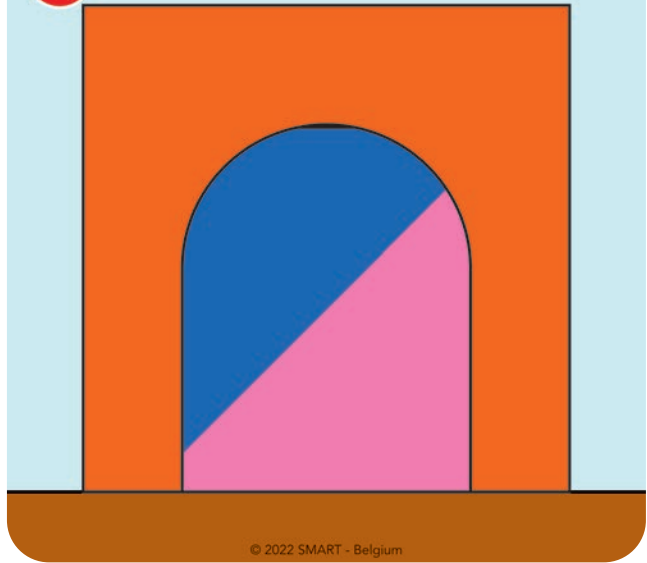


# CHALLENGES

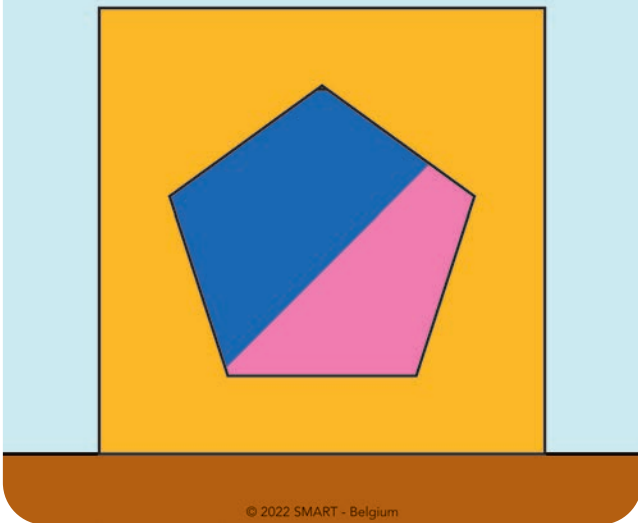
29



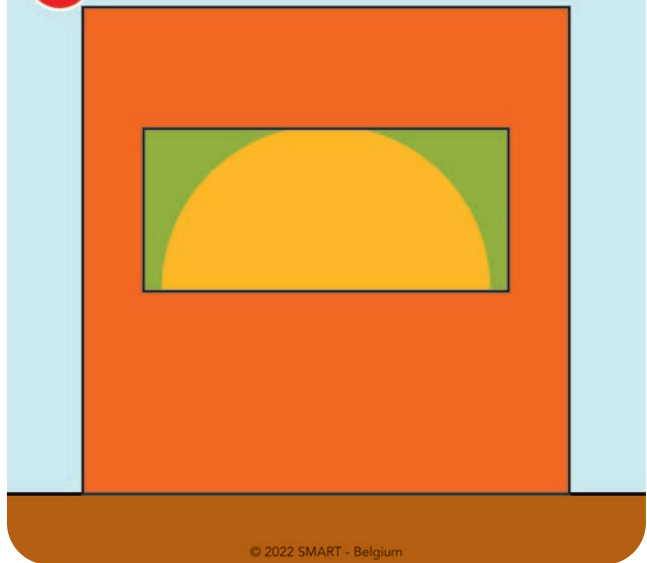
30



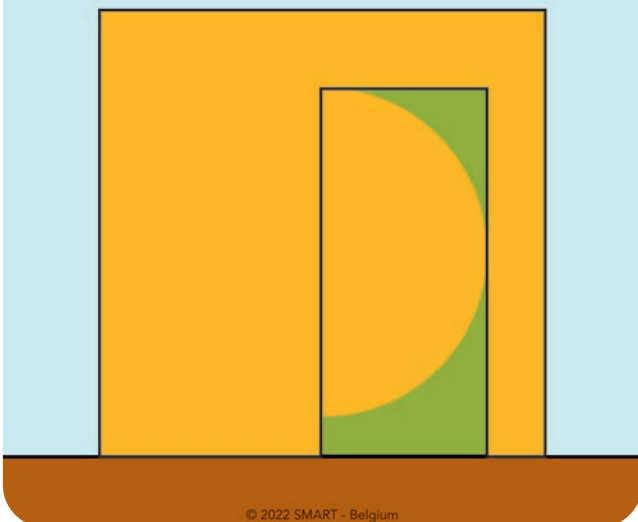
31



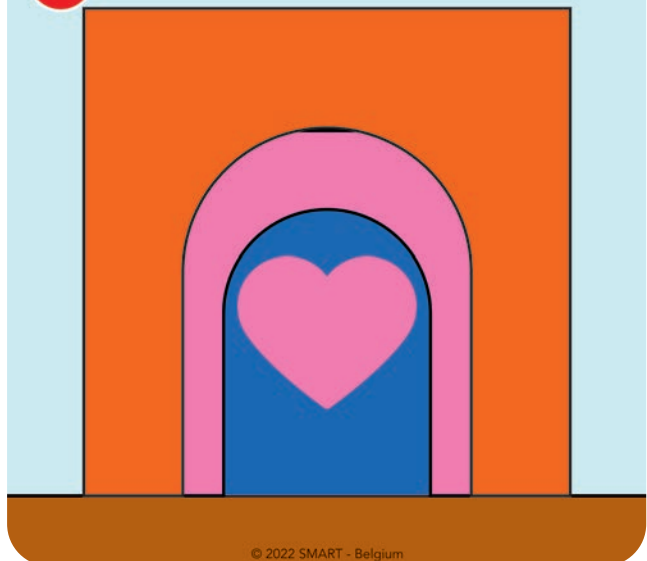
32



33

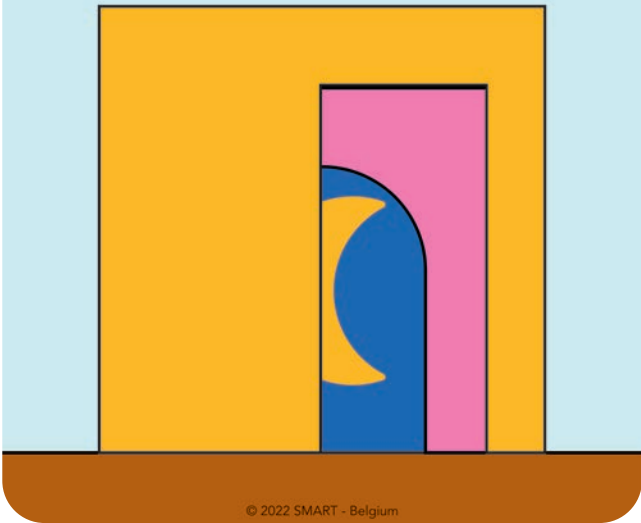


34

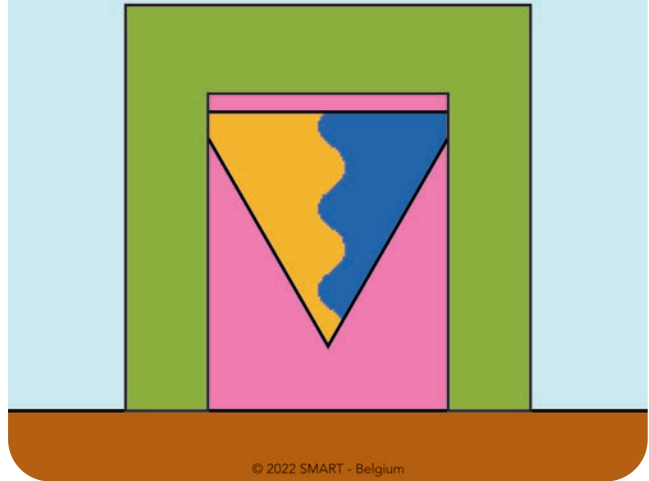


# CHALLENGES

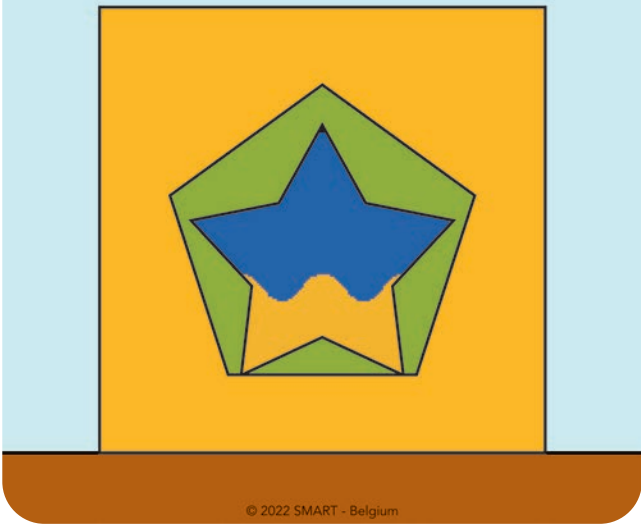
35



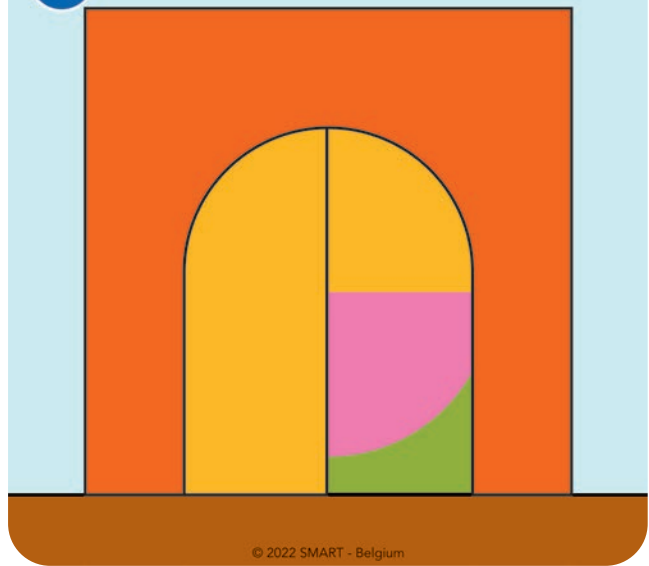
36



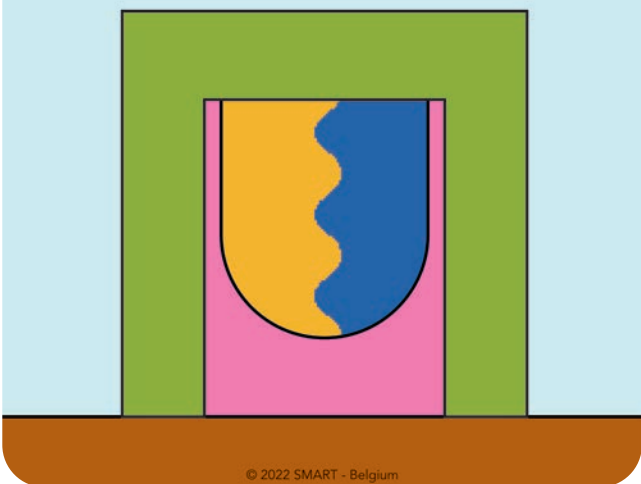
37



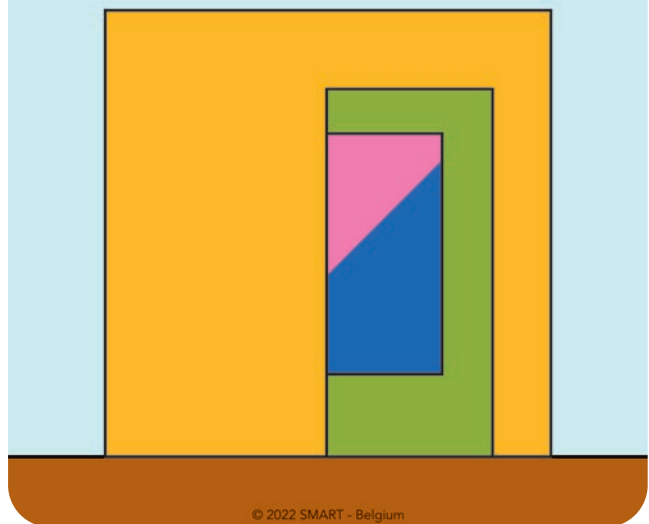
38



39

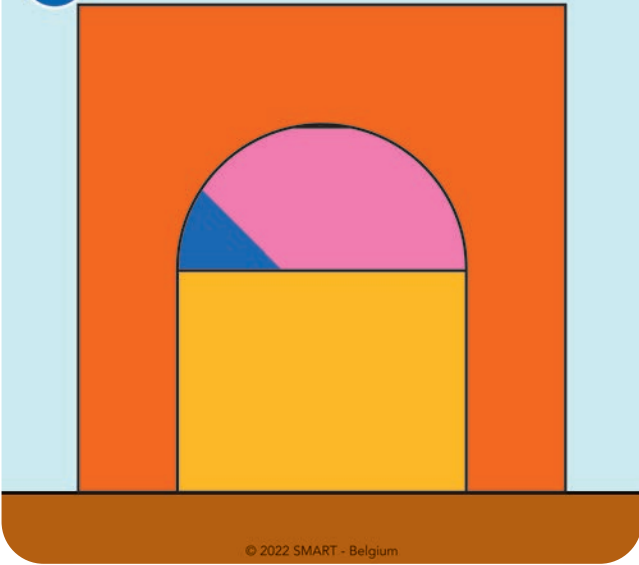


40

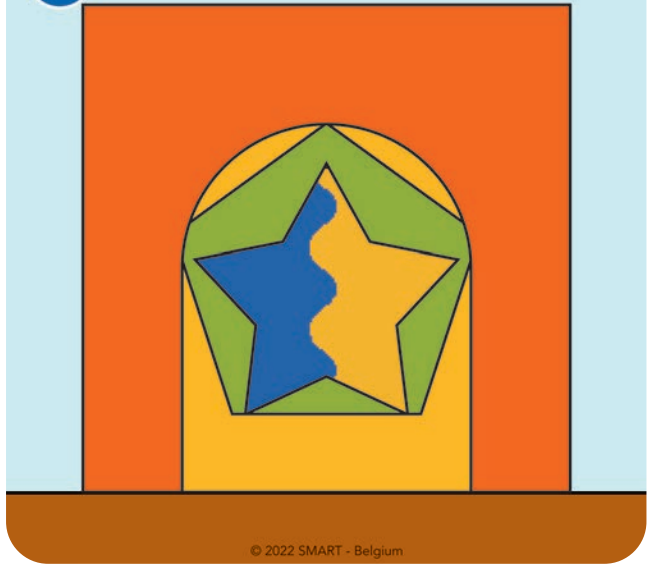


# CHALLENGES

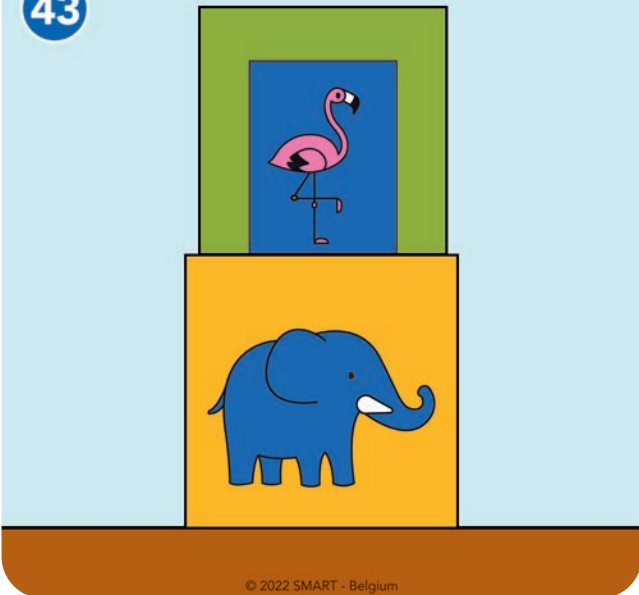
41



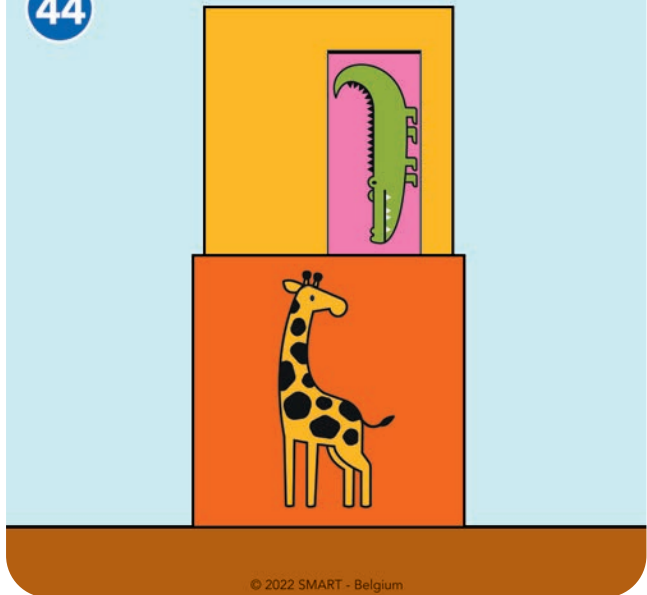
42



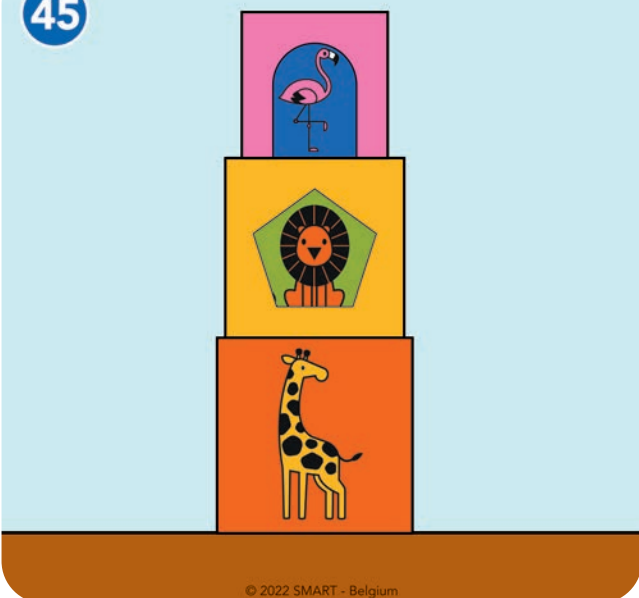
43



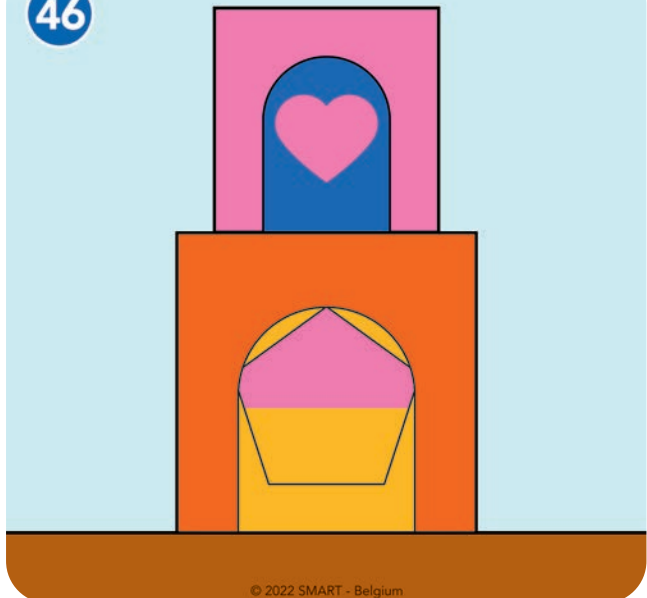
44



45

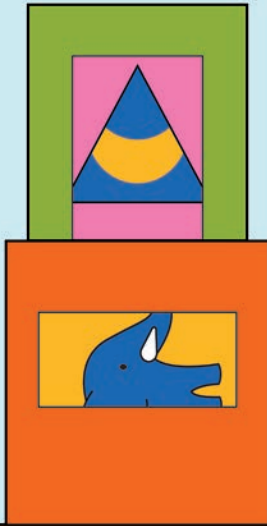


46



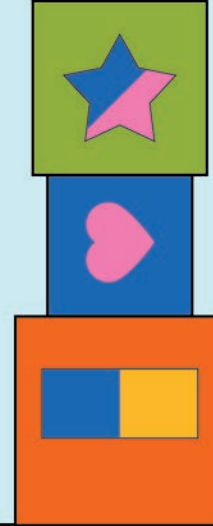
# CHALLENGES

47



© 2022 SMART - Belgium

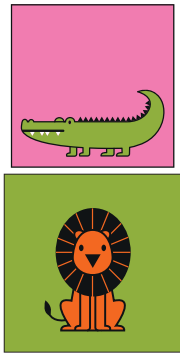
48



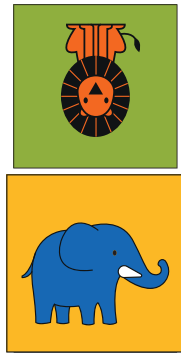
© 2022 SMART - Belgium

# SOLUTIONS

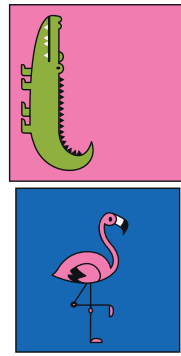
1



2



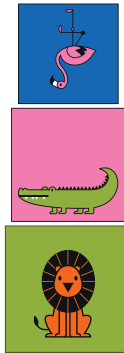
3



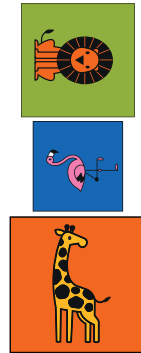
4



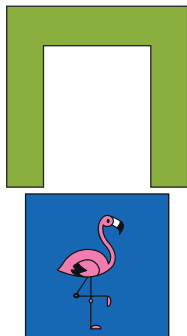
5



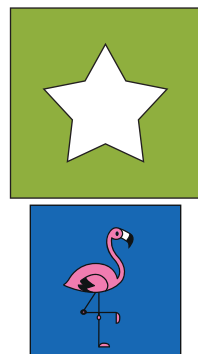
6



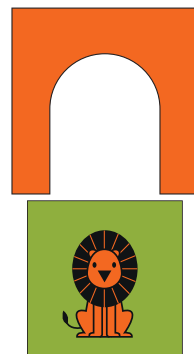
7



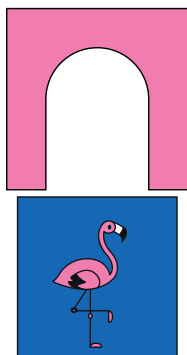
8



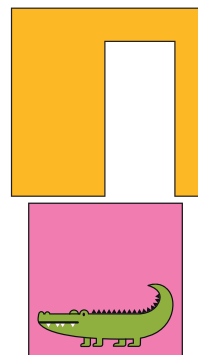
9



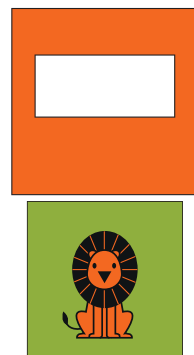
10



11

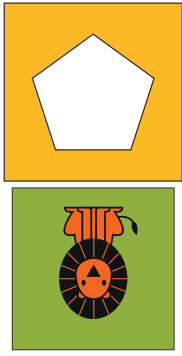


12

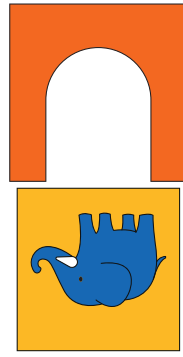


# SOLUTIONS

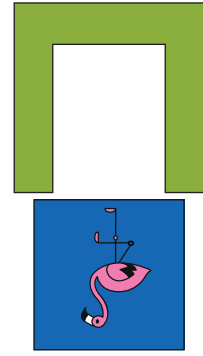
13



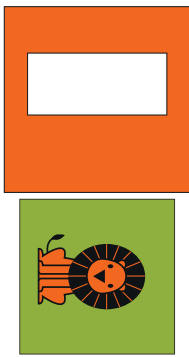
14



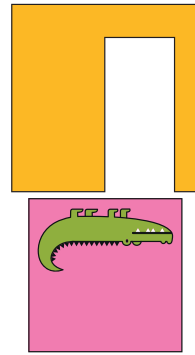
15



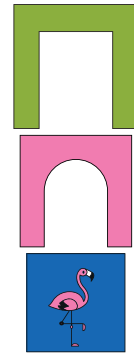
16



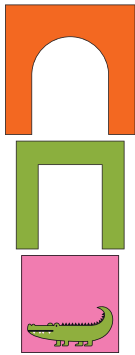
17



18



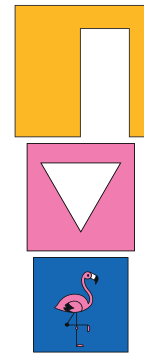
19



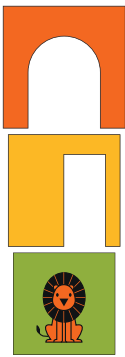
20



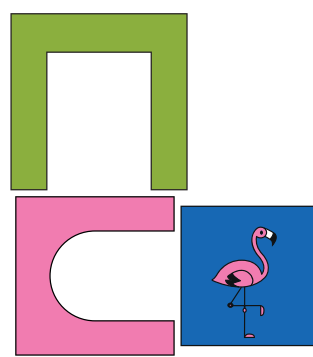
21



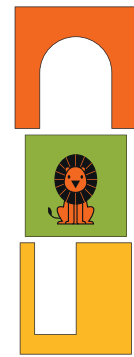
22



23

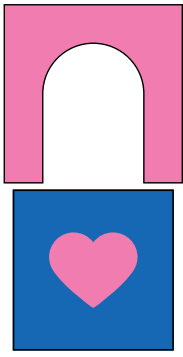


24

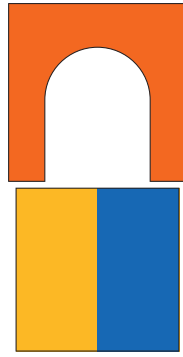


SOLUTIONS

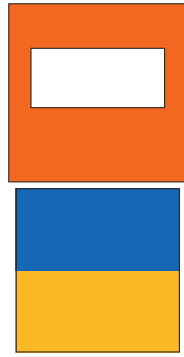
25



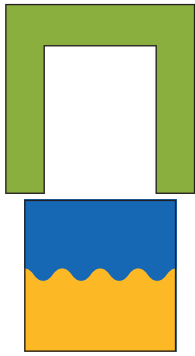
26



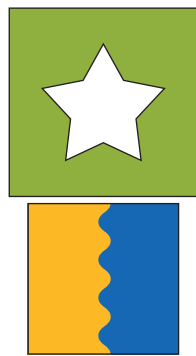
27



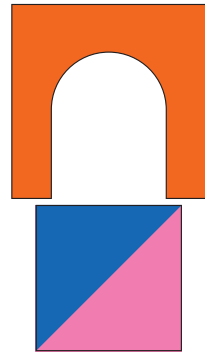
28



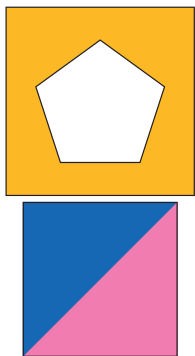
29



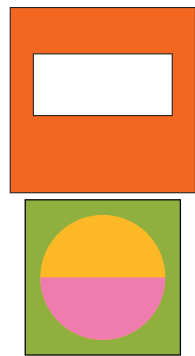
30



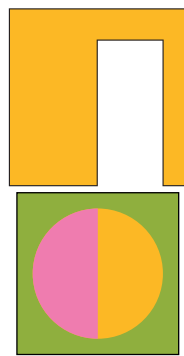
31



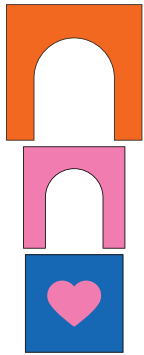
32



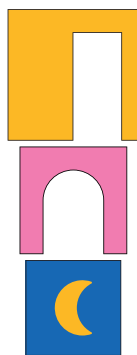
33



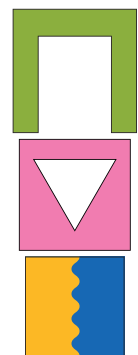
34



35



36

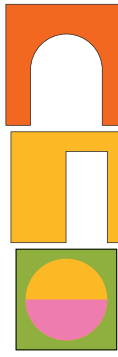


# SOLUTIONS

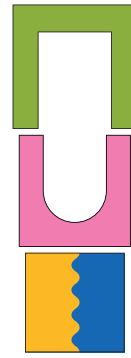
37



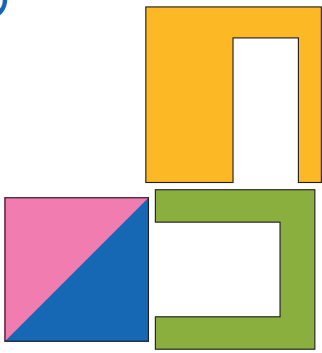
38



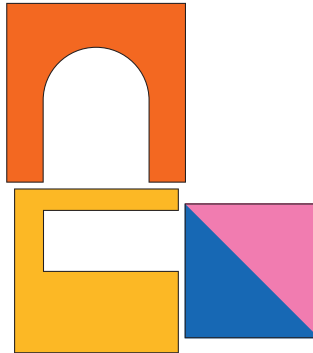
39



40



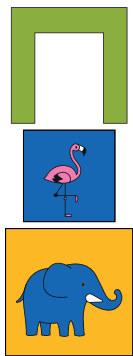
41



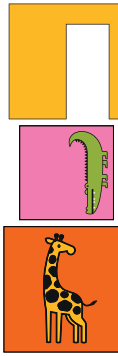
42



43



44



45



46



47



48

